

Service
Service
Service



Service Manual



CONTENTS

Main board-circuit diagram

CD & Display part	3-1
Power & Tuenr part.....	4-1
USB Host part	5-1

Main board-layout diagram

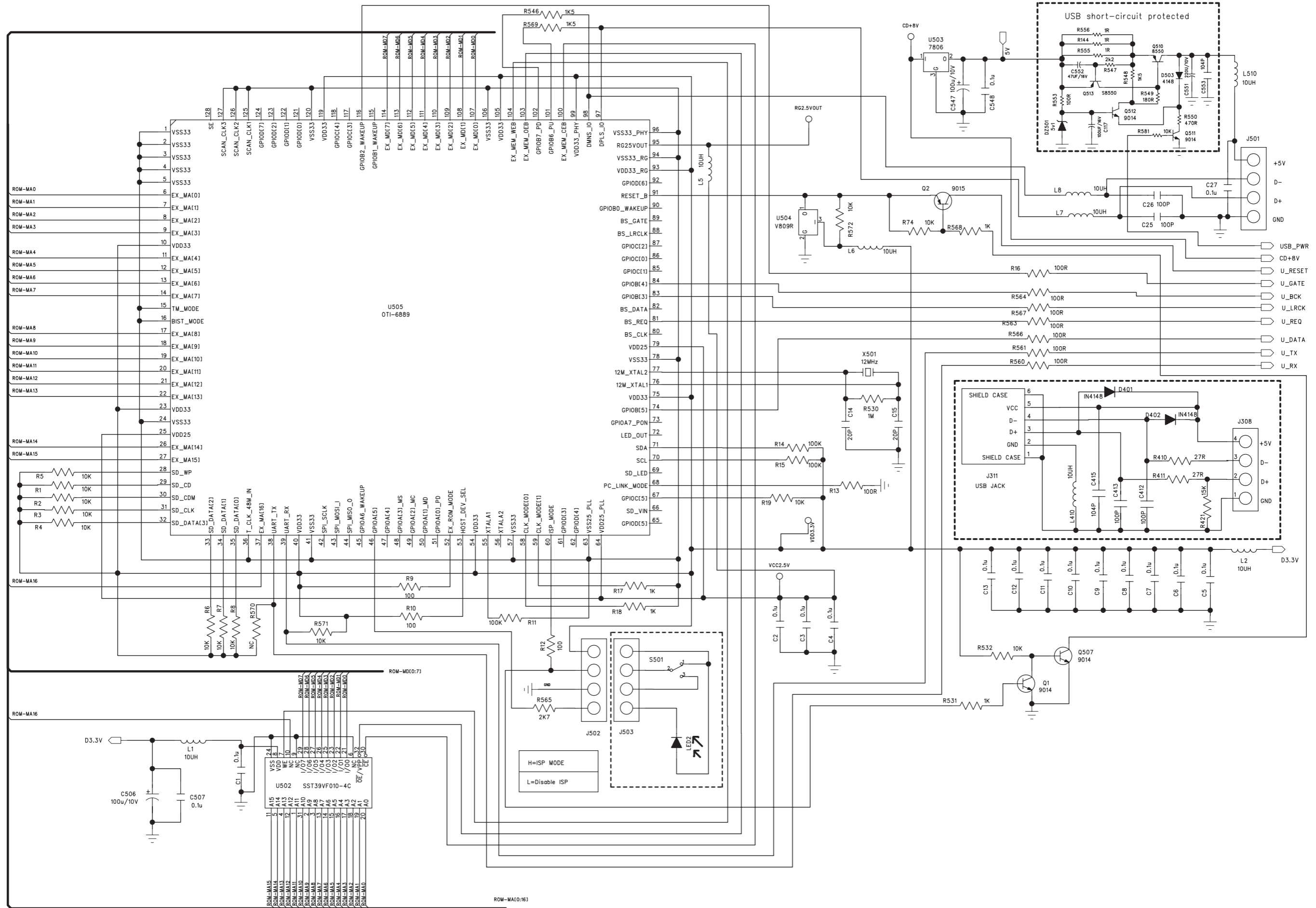
Component side view	6-1
Copper side view	7-1

Service parts list	8-1
--------------------------	-----

© Copyright 2008 Philips Consumer Electronics B.V. Eindhoven, The Netherlands
All rights reserved. No part of this publication may be reproduced, stored in a retrieval system or transmitted, in any form or by any means, electronic, mechanical, photocopying, or otherwise without the prior permission of Philips.

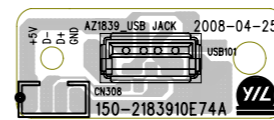
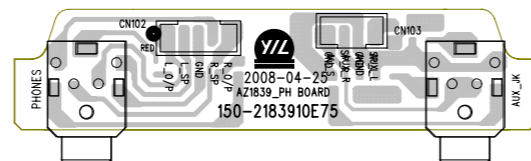
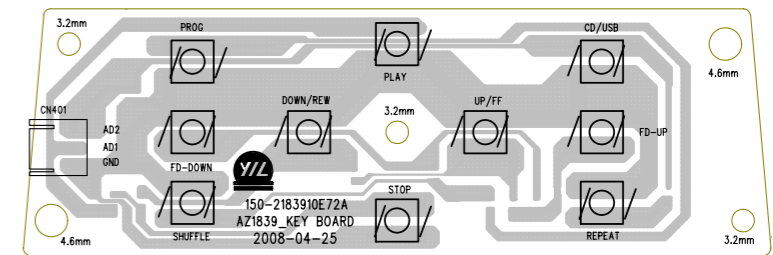
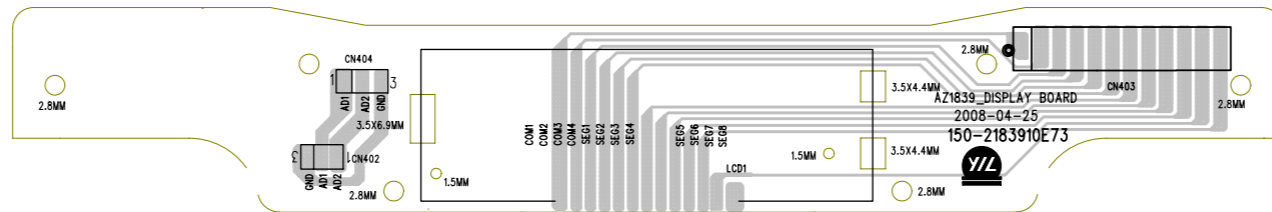
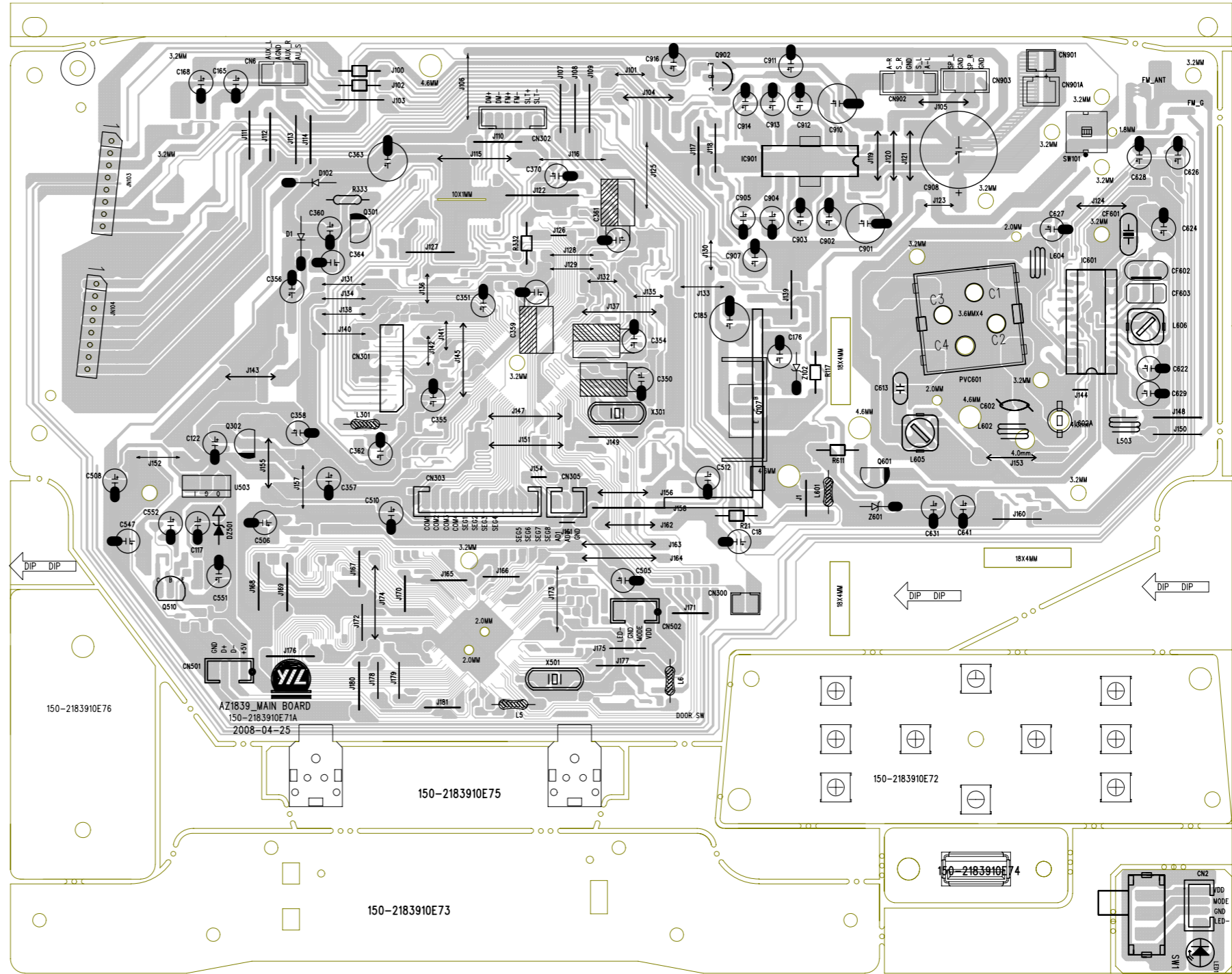
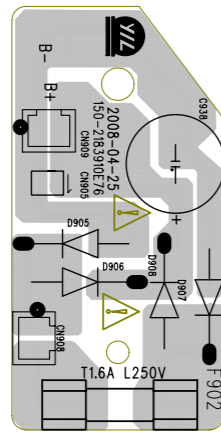
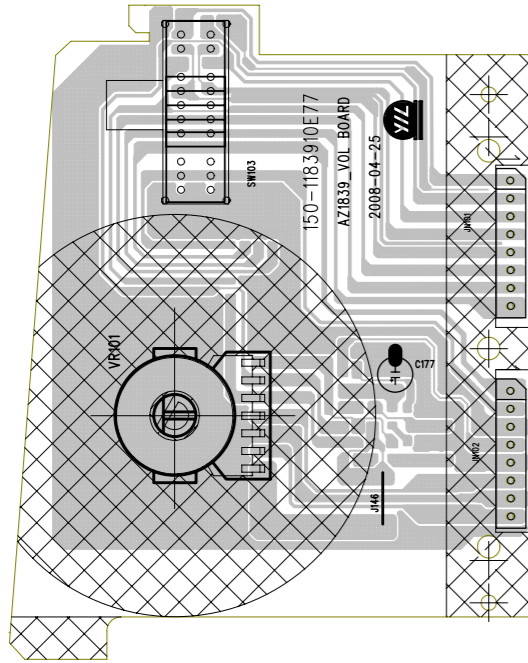


CIRCUIT DIAGRAM - MAIN BOARD USB HOST PART

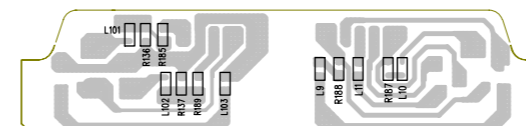
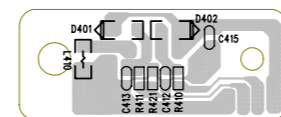
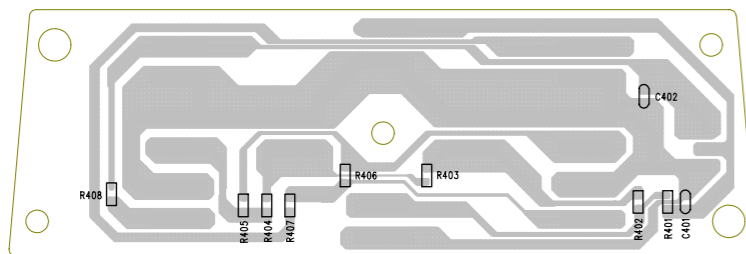
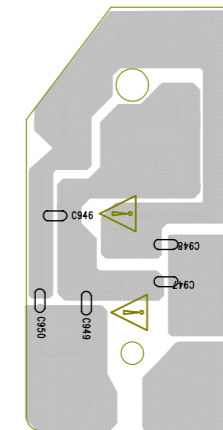
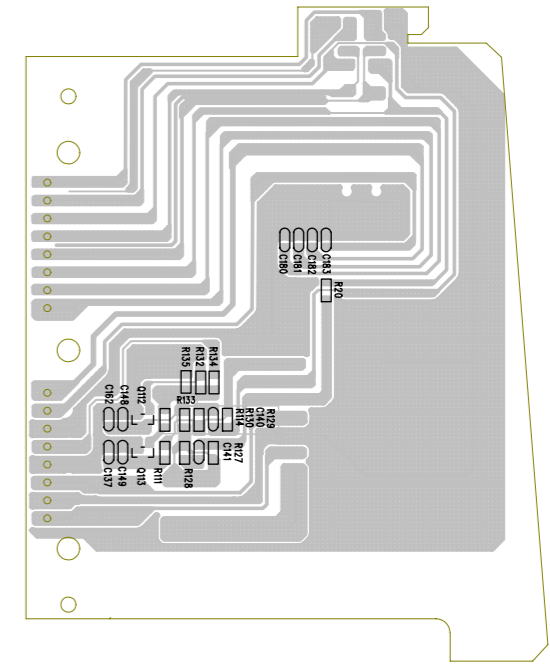
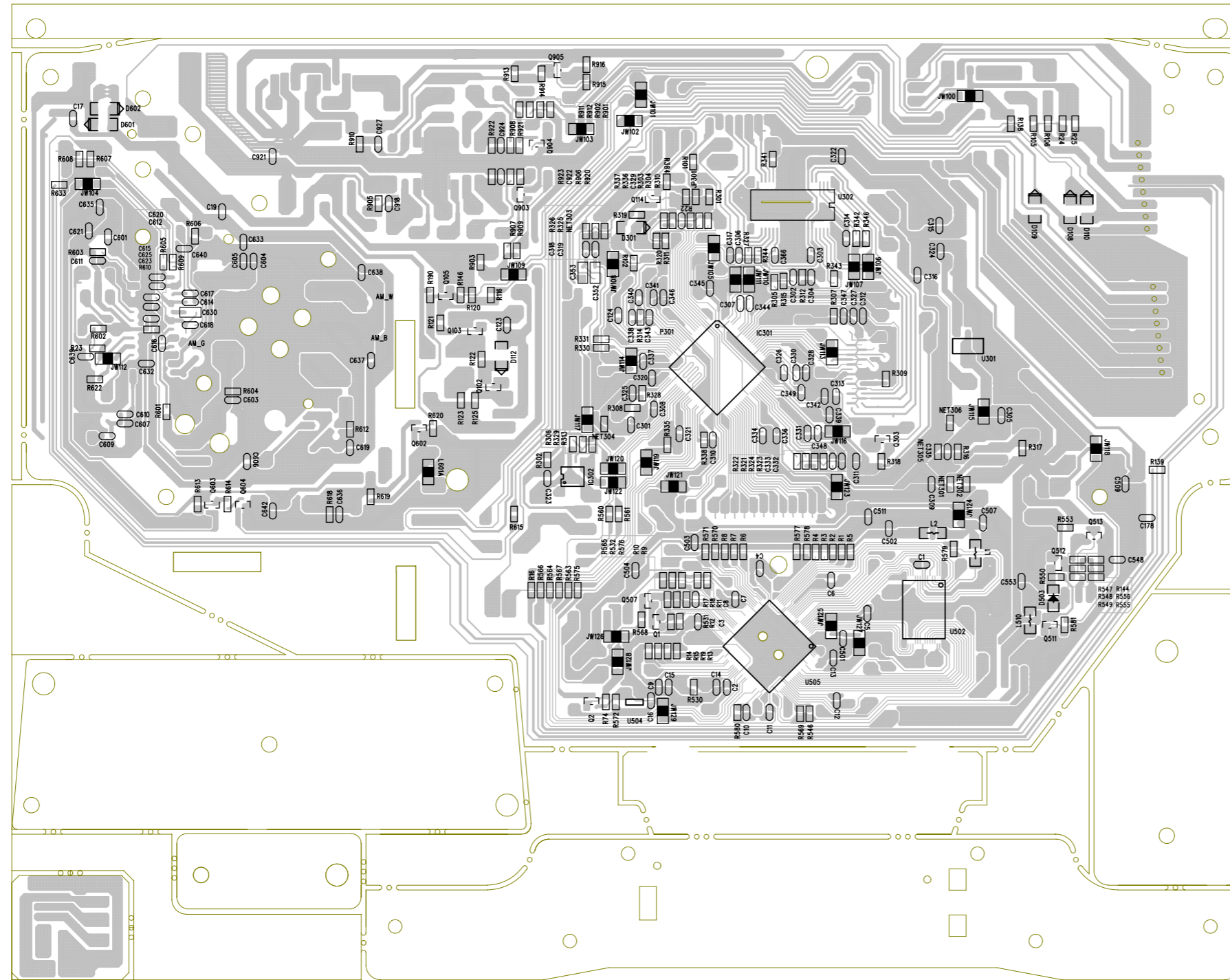


ROM-MA10:161

LAYOUT DIAGARM - COMPONENT SIDE VIEW



LAYOUT DIAGARM - COPPER SIDE VIEW



Service parts list

11	996510010489	VDE-APP AC CORD,W/SOCKET (-/55)
11	996510013441	IRAM APP AC CORD SET (-/77)
12	996510014885	SPK 4" 8ohm 2W,SIL CAP,36mm
13	996510014886	AZ1839 TRAN. EI-41 EML2259MT
14	994000004085	7871 ROD ANTENNA 2 SEG
15	996510014887	PH-AZ1839 BATTERY DOOR
16	996510014888	PH-AZ1839 CD DOOR
17	996510014889	PH-AZ1839 HANDLE
18	996510014890	PH-AZ1839 HANDLE BKT L
19	996510014891	PH-AZ1839 HANDLE BKT R
20	994000004061	7871 CD RUBBER CUSHION BLACK
21	994000005189	7871 CD RUBBER CUSHION PINK
22	996510006691	7871 CD PICK UP DUSTCOVER
23	996510026567	PH-AZ1839 TUNING VOL GEAR1
24	996510026566	PH-AZ1839 TUNING VOL GEAR2
25	996510014894	PH-AZ1839 VOL GEAR1
26	996510014895	PH-AZ1839 VOL GEAR2
27	994000004726	7831 GEAR (MODE:0.8)
28	994000004727	7831 GEAR STAND (MODE:0.8)
29	996510026613	CD MECHANISM SANYO DA11B3VZSS
11	996510016759	VDE-APP AC CORD LINE (for Korea only)
30	996510010496	VDE-APP AC CORD (-/98)

Note: Only these parts mentioned in the list are normal service parts.